



Put the Core in Concordia

Redesigning Public Spaces on Bishop Street



BISHOP STREET AS A PEDESTRIAN PRIORITY STREET

Figure 1, demonstrates the concept of a woonerf, which our team believe's can produce cohesion in the SGW campus. Woonerf is a Dutch urban planning concept which means "living street". In a woonerf, the street is **shared** among pedestrians, bicyclists, and motor vehicles; however, **pedestrians have priority** over cars (Collarte, 2012). The street is designed without a clear division between pedestrian and automobile space, meaning no curbs, so motorists are forced to slow down and travel with caution. Our goal is to make Bishop part of a **walkable campus** and ensure pedestrian safety.

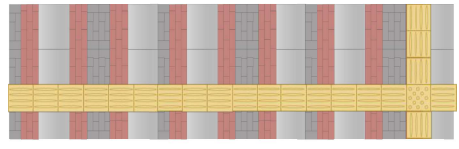
In our design, we are incorporating **Permeable Pavers**. They are easier to maintain than asphalt. Long lasting and the stones do not crack in winter months or when exposed to salt. Once it rains, it naturally filters through the permeable pavers and gets absorbed into the soil. This is a great solution for flooding and slippery streets because the water will not accumulate on the road. The salmon pink gives a Concordia identity, while the grey patterns in between share similarities of the SGW campus.



Diagram 1. A diagram of the management board for community engagement



Campus Map and Figure Ground of Sector 1: Bishop Street

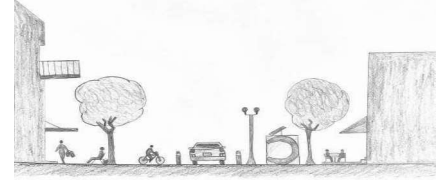


WHAT IS IT?

Our project's primary aim is to redesign Bishop street, tailoring it to the needs and habits of pedestrians. We want to emphasize the importance of foot traffic for our downtown streets. Ensuring the presence of the individual is felt and plays a more vital role in our city's own design make-up, pulling the attention away from the automobile. We intend to create more accessible & spacious zones for all people, optimizing traffic for fluidity. This process will extend past the boundaries of the street, touching base with the terrace behind Concordia's Hall building and the Visual Arts Building's front yard.

HOW DOES IT WORK?

By leveling the street, shrinking the occupied spaces for automobiles, and widening the areas that are tooled for pedestrians. We will prioritize all pedestrian traffic, shaping it with fluidity in mind. By doing so, we want to implement new infrastructure by way of ramps, textured surfaces, seating areas and bicycle parking into the street. We believe this will provide aid to those who whose living conditions are not always brought to the forefront when conducting new urban developments. These developments will streamline the core needs of our School's mobile community into our sector, challenging old aesthetic & structural standards.



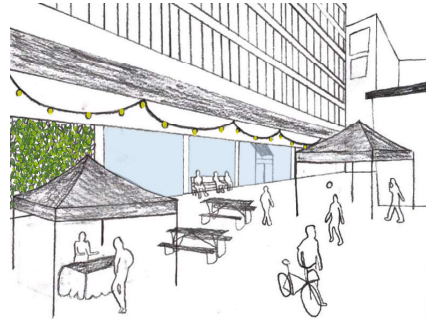
HOW IS IT DISTINCTIVE?

Distinctive features about our project lies within its concept. We are working towards the full pedestrianization of bishop street. It may not end up becoming fully tooled for foot traffic, though the idea of reworking this space so that it may become a prominent expense that welcomes any and all types of alternatives modes of movement, is truly something we strive for. Not only that, but through artistic means of expression, we aim to paint, design, and glamorize these stale palettes. A radical new approach, to the Concordian identity.

WHAT ARE THE OUTCOMES?

We hope to help shape our campus into one that can not only accommodate the needs of our community, but to also be more openly accessible to the public. Whether that be by way of producing more visually stimulating public spaces like the new yard for the Visual Arts building, or continued efforts aimed at easing the variable difficulties of mobile traffic for pedestrians. Incorporating core values means more than just working for the now to us, it means laying down a solid foundation that can be timelessly improved upon. Shifting & adapting to meet the metrics and morals of urban life.

HALL TERRACE



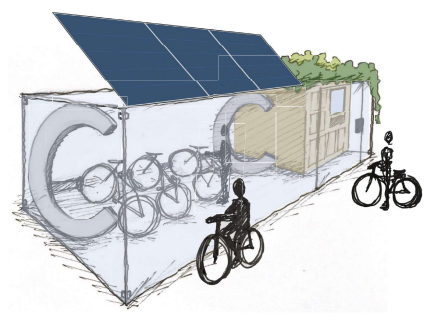
The Hall terrace, located behind the hall building, is a great place for events, however, it is very underused. The reason why it is underused and not very popular is because the terrace is very hidden, so many Concordia students do not even know it exists. With our board, we envision the space being used year round for all kind of events, fairs and activities. The terrace will have temporary structures such as tents, lights, picnic tables and benches. Moreover, the space lacks greenery, so by adding vertical 'Boston Ivy' plants growing on the side on the Hall building.

VISUAL ARTS YARD



The Visual Arts front Yard is a really good place for markets where artists could share/exhibit or sell their art works. However, the space lacks greenery (trees, plants). We propose to have rooftop garden on VA building, creating a second smaller version of a greenhouse in the campus. The VA site has a concrete wall surrounding the space, so we would want to tear down the wall on Crescent but keep Rene-Levesque because that side has too much high speed traffic. Community engagement in this space would include participation from Concordia's art department and local artists to design and install ceramic art tiles for visually appealing walls.

BICYCLE MODULE



We propose a glass transparent bicycle parking model that is secure and accessible. With an automated-operating system, people would be able to park, lock, and retrieve their bikes on their own. The automated system will lock the bikes once they are parked; bikers will then receive a token as a key for them to retrieve their bikes. While the container would be opened to the public during the day, it will be locked at night, only giving access to people who have their bikes in the parking container and hold tokens.